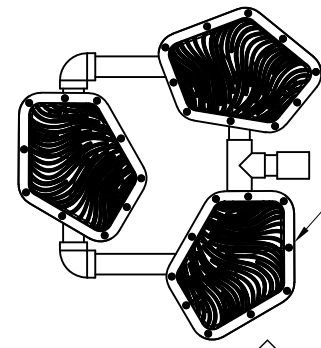


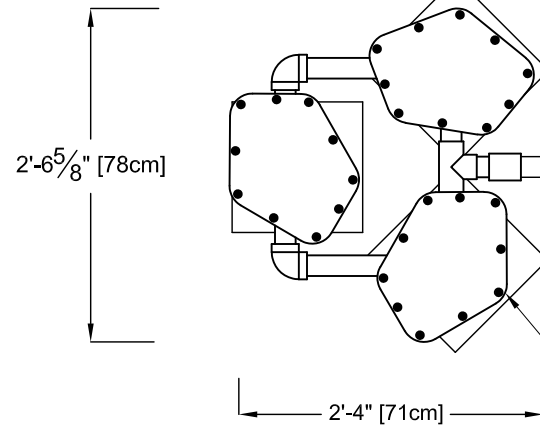
THESE DRAWINGS PROVIDE A GENERIC OVERVIEW OF THE INSTALLATION. THEY ARE NOT PROJECT SPECIFIC OR REFLECT ANY CUSTOMIZATION UNLESS NOTED. PLEASE CONTACT VORTEX AQUATIC STRUCTURES INTERNATIONAL FOR MORE DETAILS.

PLAN VIEW

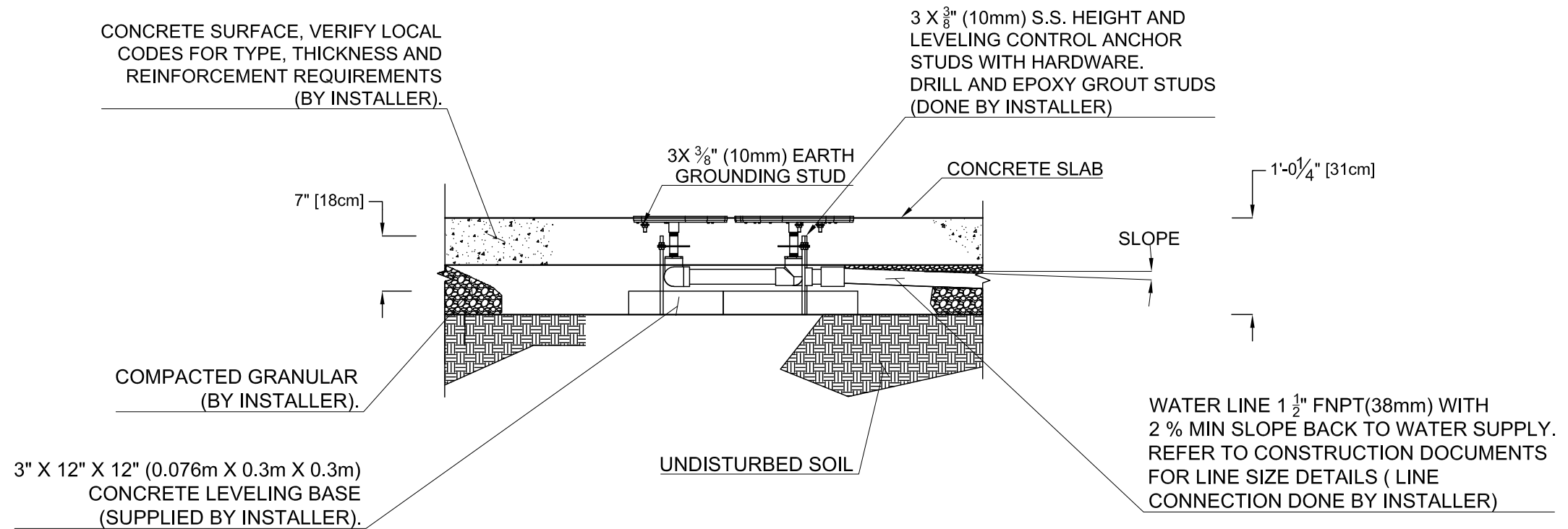


AFTER CONCRETE HAS BEEN  
POURED AND CURED, REMOVE WINTER CAPS AND  
ASSEMBLE HOP RUBBER COVER AND FRAMING RING  
(SHIPPED UNASSEMBLED)  
STORE WINTER CAPS IN SECURE LOCATION FOR  
LATER USE

FRONT ELEVATION  
VIEW



PRODUCT INSTALLED WITH  
WINTER CAPS ASSEMBLED. (SHOWN)  
FOR EASIER INSTALLATION: ADD MASKING TAPE ALL  
AROUND AND ON THE TOP SURFACE OF WINTER CAP.  
IT WILL HELP REMOVAL AFTER CONCRETE POUR.



CONCRETE SURFACE, VERIFY LOCAL  
CODES FOR TYPE, THICKNESS AND  
REINFORCEMENT REQUIREMENTS  
(BY INSTALLER).

3 X 3/8\" (10mm) S.S. HEIGHT AND  
LEVELING CONTROL ANCHOR  
STUDS WITH HARDWARE.  
DRILL AND EPOXY GROUT STUDS  
(DONE BY INSTALLER)

COMPACTED GRANULAR  
(BY INSTALLER).

3\" X 12\" X 12\" (0.076m X 0.3m X 0.3m)  
CONCRETE LEVELING BASE  
(SUPPLIED BY INSTALLER).

UNDISTURBED SOIL

SLOPE

WATER LINE 1 1/2\" FNPT(38mm) WITH  
2 % MIN SLOPE BACK TO WATER SUPPLY.  
REFER TO CONSTRUCTION DOCUMENTS  
FOR LINE SIZE DETAILS ( LINE  
CONNECTION DONE BY INSTALLER)

PRODUCT NAME: HOP No.1

PRODUCT NUMBER: VOR-7133.4XXX

DATE: 09/20/2022

SHEET NO: 1/1

11"x17" SHEET SIZE

