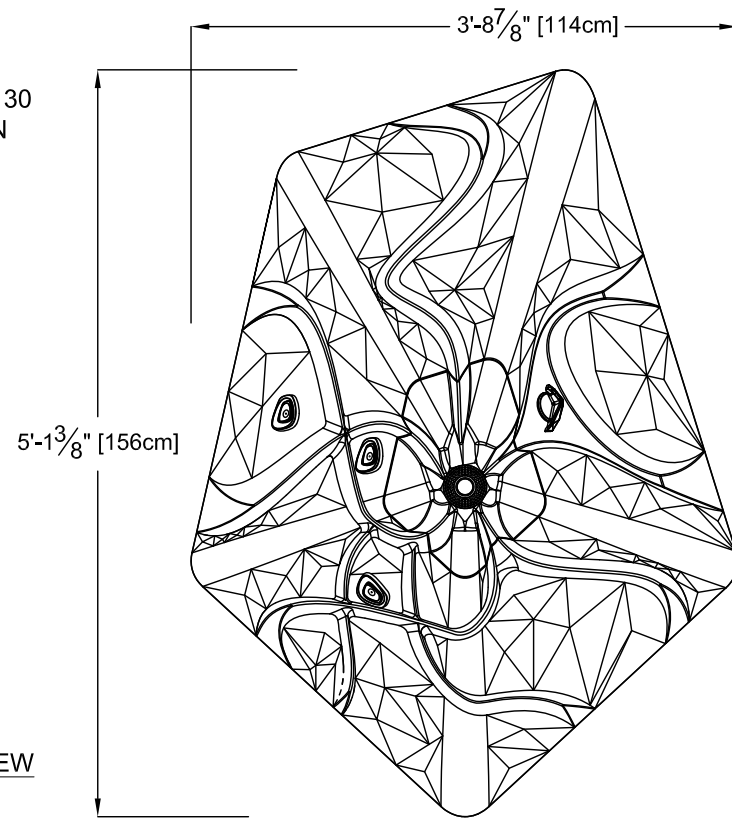


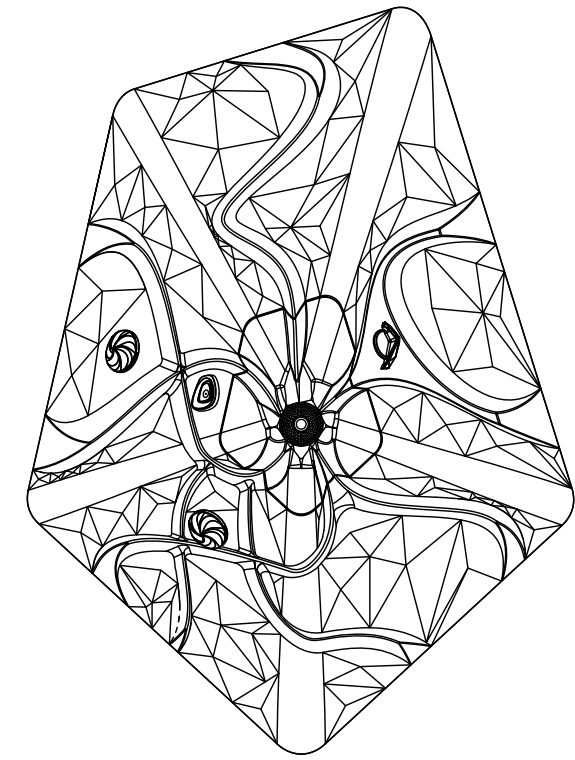
THESE DRAWINGS PROVIDE A GENERIC OVERVIEW OF THE INSTALLATION. THEY ARE NOT PROJECT SPECIFIC OR REFLECT ANY CUSTOMIZATION UNLESS NOTED. PLEASE CONTACT VORTEX AQUATIC STRUCTURES INTERNATIONAL FOR MORE DETAILS.

TOP VIEW  
(ALTO No.1 VOR-7130  
CONFIGURATION  
SHOWN)



FRONT ELEVATION VIEW

ALTO No.2 VOR-7131  
CONFIGURATION

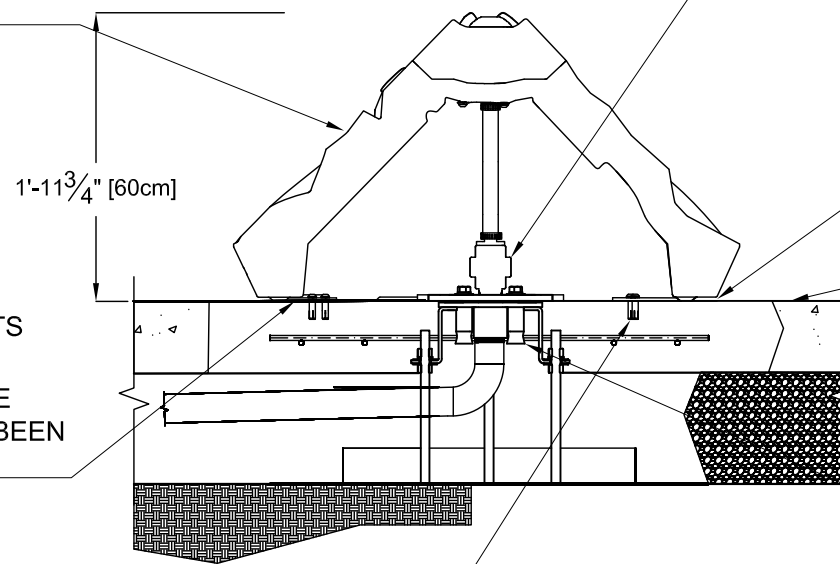


STEP 4:  
ALTO MANIFOLD TO BE MOUNTED ON SAFESWAP  
USING HARDWARE SUPPLIED  
WITH SAFESWAP.  
MANIFOLD CONFIGURATION  
OUTLET CONFIGURATION MAY  
VARY PER ALTO PRODUCT

STEP 5:  
ASSEMBLE ALTO BODY TO BRACKETS  
USING 3/8-16 X 1" LONG HARDWARE  
PROVIDED  
(ALTO No.1, VOR-7130 SHOWN)

STEP 1:  
INSTALLATION JIG 55002.1226 (22900.1957) USE JIG  
TO MARK HOLES FOR CONCRETE INSERT  
LOCATIONS. REMOVE AFTER HOLES ARE  
MARKED.  
REFER TO PIPING AND ELECTRICAL  
DRAWING FOR PRODUCT ORIENTATION

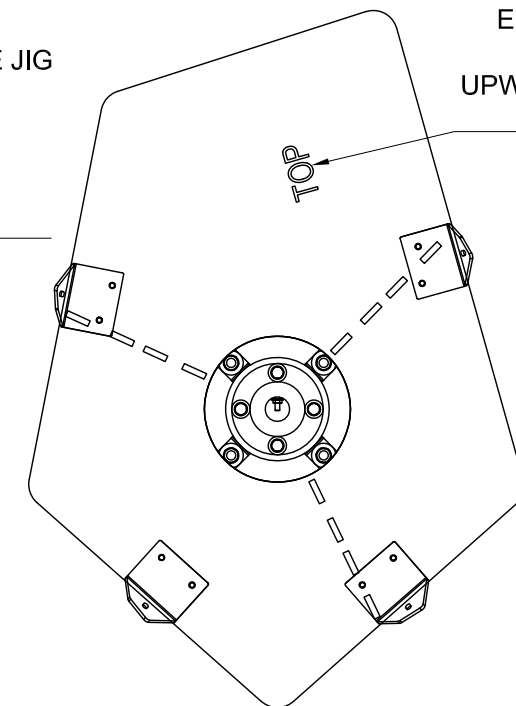
ENGRAVED MARKING  
SHOULD BE FACING  
UPWARDS WHEN USING  
THE JIG



STEP 3:  
INSTALL ALTO MOUNTING BRACKETS  
USING 3/8-16 X 3/4" LONG HARDWARE  
SUPPLIED, TO CONCRETE SURFACE  
AFTER CONCRETE INSERTS HAVE BEEN  
INSTALLED.

CONCRETE  
SURFACE

TYPICAL SAFESWAP No.2  
(REFER TO SAFESWAP  
INSTALLATION DRAWING  
FOR DETAILS)



TOP VIEW  
ALTO INSTALLATION JIG WITH SAFESWAP.  
ALTO ORIENTATION WITH SAFESWAP MAY  
VARY FROM ONE PROJECT TO ANOTHER

STEP 2:  
AFTER HOLES HAVE BEEN DRILLED INSTALL  
CONCRETE INSERTS (SUPPLIED WITH PRODUCT).  
USE TOOL 1990.2581 SUPPLIED WITH PRODUCT  
AND A HAMMER TO INSTALL INSERTS.  
MINIMUM INSTALL DEPTH 1 1/2" (38mm)  
INSERT SHOULD BE FLUSH WITH  
CONCRETE SURFACE

PRODUCT NAME: ALTO No.1 AND 2 INSTALLATION

PRODUCT NUMBER: VOR-7130, 7131

DATE: 09/26/2018

SHEET NO: 1/1

11"x17" SHEET SIZE

