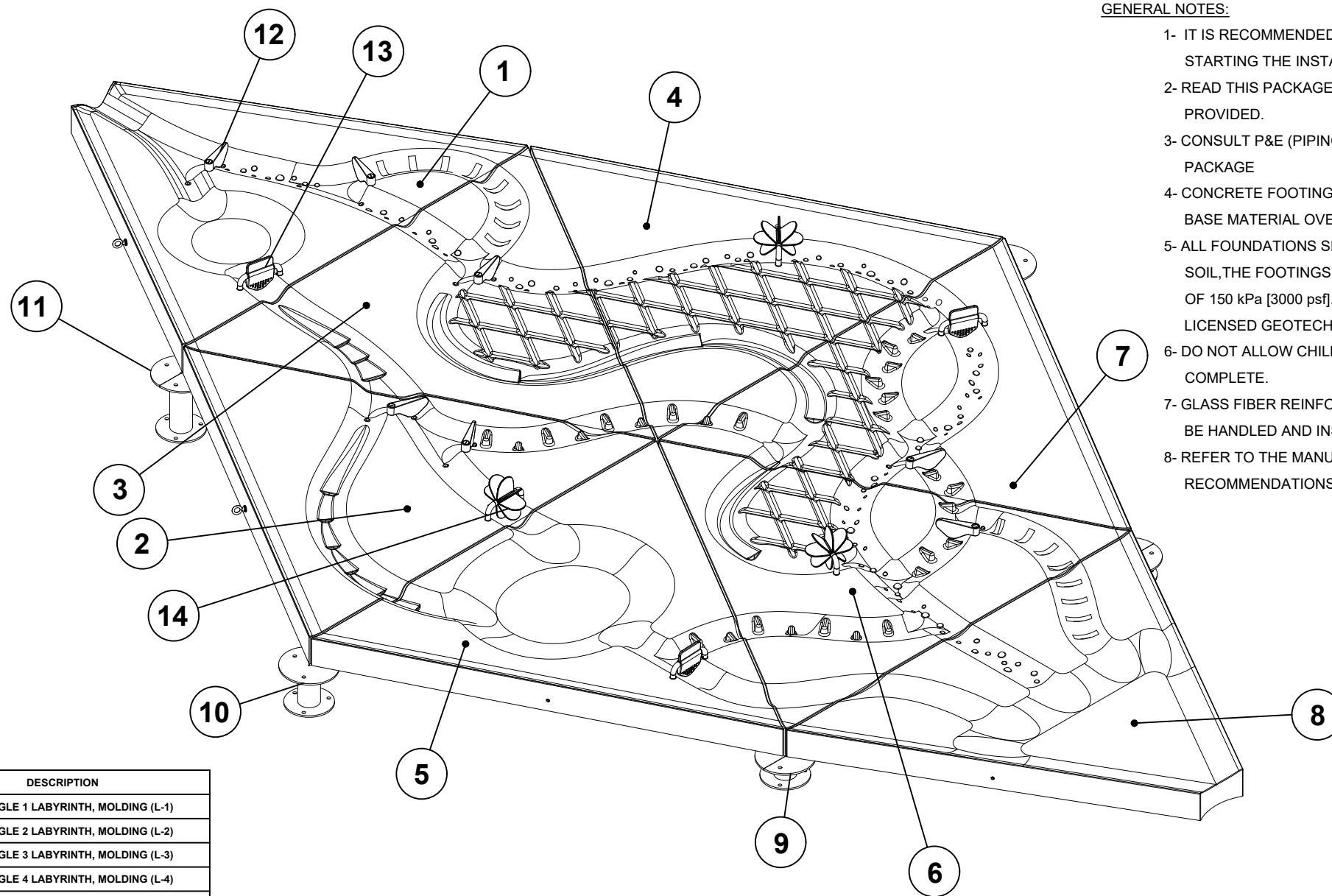


WATER JOURNEY LABYRINTH INSTALLATION INSTRUCTIONS

COPYRIGHT VORTEX AQUATIC STRUCTURES INTERNATIONAL. THIS DOCUMENT AND THE IDEAS, RENDERINGS AND OTHER CONTENTS CONTAINED THEREIN ARE THE SOLE PROPERTY OF VORTEX AQUATIC STRUCTURES INTERNATIONAL AND MAY NOT BE DISSEMINATED, COPIED, REPRODUCED OR OTHERWISE USED WITHOUT PRIOR WRITTEN CONSENT OF VORTEX AQUATIC STRUCTURES INTERNATIONAL.
 CE DOCUMENT EST EN TOUT TEMPS LA PROPRIÉTÉ DE VORTEX AQUATIC STRUCTURES INTERNATIONAL INC. ET NE PEUT ÊTRE UTILISÉ OU REPRODUIT SANS UN CONSENTEMENT ÉCRIT DE VORTEX AQUATIC STRUCTURES INTERNATIONALES INC.



GENERAL NOTES:

- 1- IT IS RECOMMENDED TO READ ALL INSTRUCTIONS PROVIDED BEFORE STARTING THE INSTALLATION.
- 2- READ THIS PACKAGE IN CONJUNCTION WITH THE WATER JOURNEY MANUAL PROVIDED.
- 3- CONSULT P&E (PIPING AND ELECTRICAL) IN CONJUNCTION WITH THIS PACKAGE
- 4- CONCRETE FOOTING TO BE SET ON 6" MINIMUM OF COMPACTED GRANULAR BASE MATERIAL OVER UNDISTURBED NATIVE SOIL.
- 5- ALL FOUNDATIONS SHALL BE SET ON NATURAL UNDISTURBED INORGANIC SOIL, THE FOOTINGS HAVE BEEN DESIGNED FOR A SOIL BEARING CAPACITY OF 150 kPa [3000 psf]. THE SOIL BEARING CAPACITY SHALL BE VERIFIED BY A LICENSED GEOTECHNICAL ENGINEER BEFORE FOOTINGS ARE POURED.
- 6- DO NOT ALLOW CHILDREN IN THE SETUP AREA UNTIL ASSEMBLY IS COMPLETE.
- 7- GLASS FIBER REINFORCED CONCRETE (GFRC) SLABS ARE FRAGILE AND MUST BE HANDLED AND INSTALLED WITH CARE.
- 8- REFER TO THE MANUAL FOR REPAIR AND ROUTINE MAINTENANCE RECOMMENDATIONS.

CONTENT	SHEET
COVER PAGE	1
FOUNDATION DETAILS	2
LEVELING DISKS INSTALLATION	3
DRAIN & PUMP INSTALLATION	4
SLABS INSTALLATION	5
WATER JOURNEY FEATURE INSTALLATION	6

ITEM NO.	QTY.	NUMBER	DESCRIPTION
1	1	33100.4090	TRIANGLE 1 LABYRINTH, MOLDING (L-1)
2	1	33100.4091	TRIANGLE 2 LABYRINTH, MOLDING (L-2)
3	1	33100.4092	TRIANGLE 3 LABYRINTH, MOLDING (L-3)
4	1	33100.4093	TRIANGLE 4 LABYRINTH, MOLDING (L-4)
5	1	33100.4094	TRIANGLE 5 LABYRINTH, MOLDING (L-5)
6	1	33100.4095	TRIANGLE 6 LABYRINTH, MOLDING (L-6)
7	1	33100.4096	TRIANGLE 7 LABYRINTH, MOLDING (L-7)
8	1	33100.4144	TRIANGLE 8 LABYRINTH, MOLDING (L-8)
9	2	33501.3636	GSM - WJ ANCHORING LEVEL 3, WELDING
10	3	33501.3639	GSM - WJ ANCHORING LEVEL 2 (#2), WELDING
11	2	33501.3640	GSM - WJ ANCHORING LEVEL 1, WELDING
12	7	33903.0832	GATE, ASSEMBLY
13	3	33903.0833	STRAINER, ASSEMBLY
14	3	33903.0834	WATERMILL, ASSEMBLY
15	3	11990.2450	STEEL EYEBOLT WITH SHOULDER FOR LIFTING, 1/2"-13 THREADED SIZE, 1 1/2" LG TH
16	9	11155.008	FLAT WASHER 1/2"
17	1	33903.1036	LABYRINTH - SPARE ITEMS
18	3	22135.3953	WJ ANCHORING TEMPLATE

WATER JOURNEY-LABYRINTH

Project Location / Lieu du projet

Project Number / Numéro de projet

Order Number / Numéro de commande

Date	Revision Description	No.	By/Par
11/02/2019	UPDATED WATER SOURCE	03	JC
11/10/2017	UPDATED REV.	02	MM
08/02/2016	RELEASE FOR INSTALLATION	01	HK

Drawing Title/Titre du Dessin

WATER JOURNEY-LABYRINTH

Drawn by/Dessiné par
HK

Verified by/Verifié par

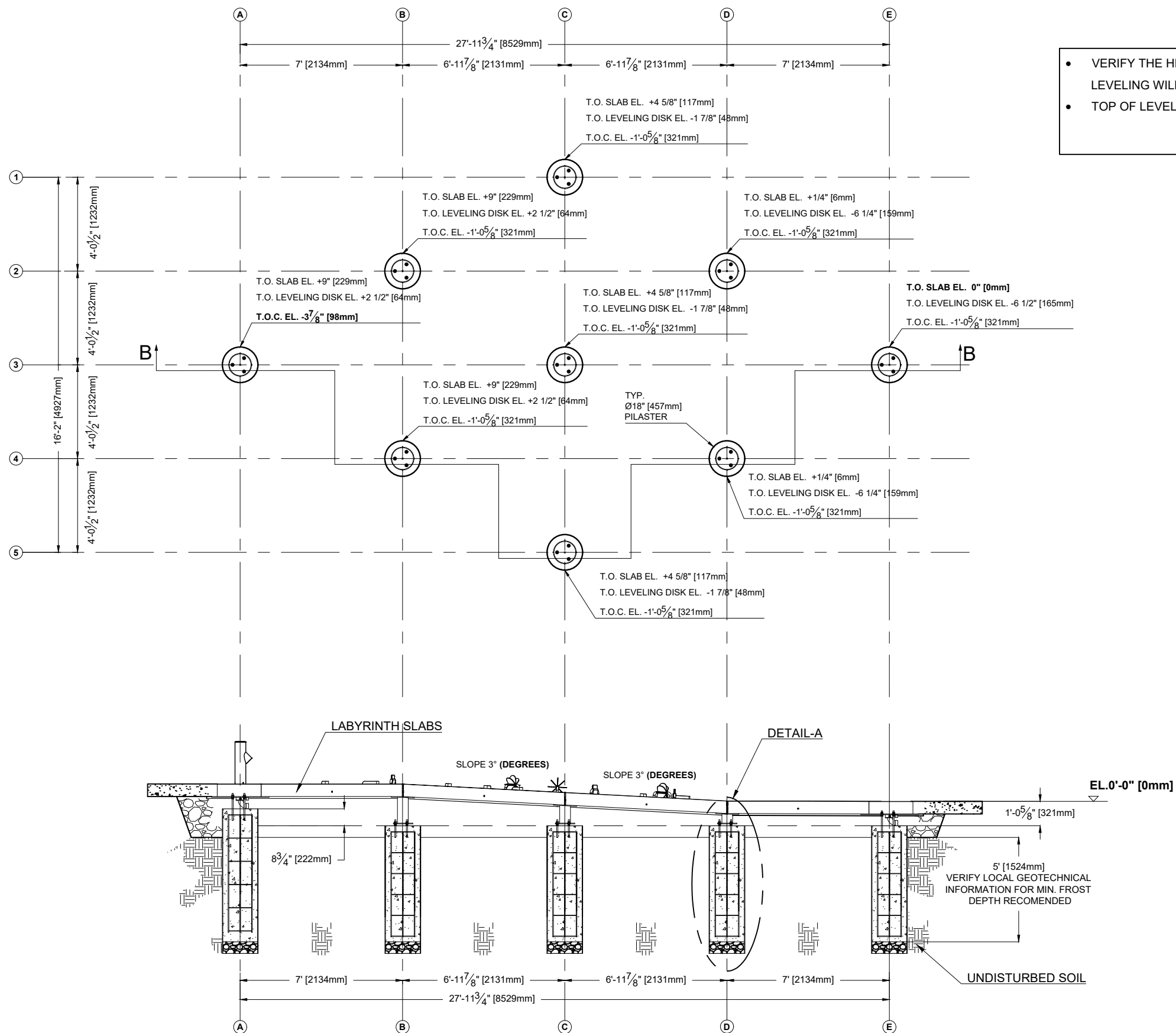
Scale/Echelle
N.T.S.

Date
08/02/2016

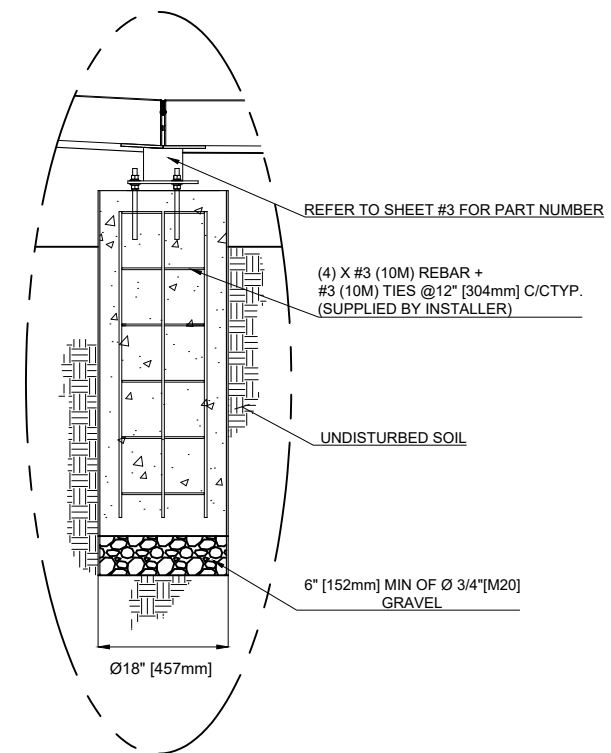
Page #
WJ01

Rev.
R02

- VERIFY THE HEIGHT OF EACH PILASTER BEFORE POURING CONCRETE. FINAL LEVELING WILL ONLY ALLOW MINIMAL ADJUSTMENT.
- TOP OF LEVELING DISK IS MEASURED AT THE CENTER OF THE TOP PLATE.



SECTION B-B



DETAIL-A

WATER JOURNEY-LABYRINTH

Project Location / Lieu du projet

Project Number / Numéro de projet

Order Number / Numéro de commande

Date	Revision Description	No.	By/Par
11/02/2019	WATER SOURCE UPDATE	03	JC
11/10/2017	UPDATED REV.	02	MM
08/02/2016	RELEASE FOR INSTALLATION	01	HK

Drawing Title/Titre du Dessin

FOUNDATION DETAILS

Drawn by/Dessiné par

HK

Verified by/Verifié par

Scale/Echelle

N.T.S.

Date

11/02/2019

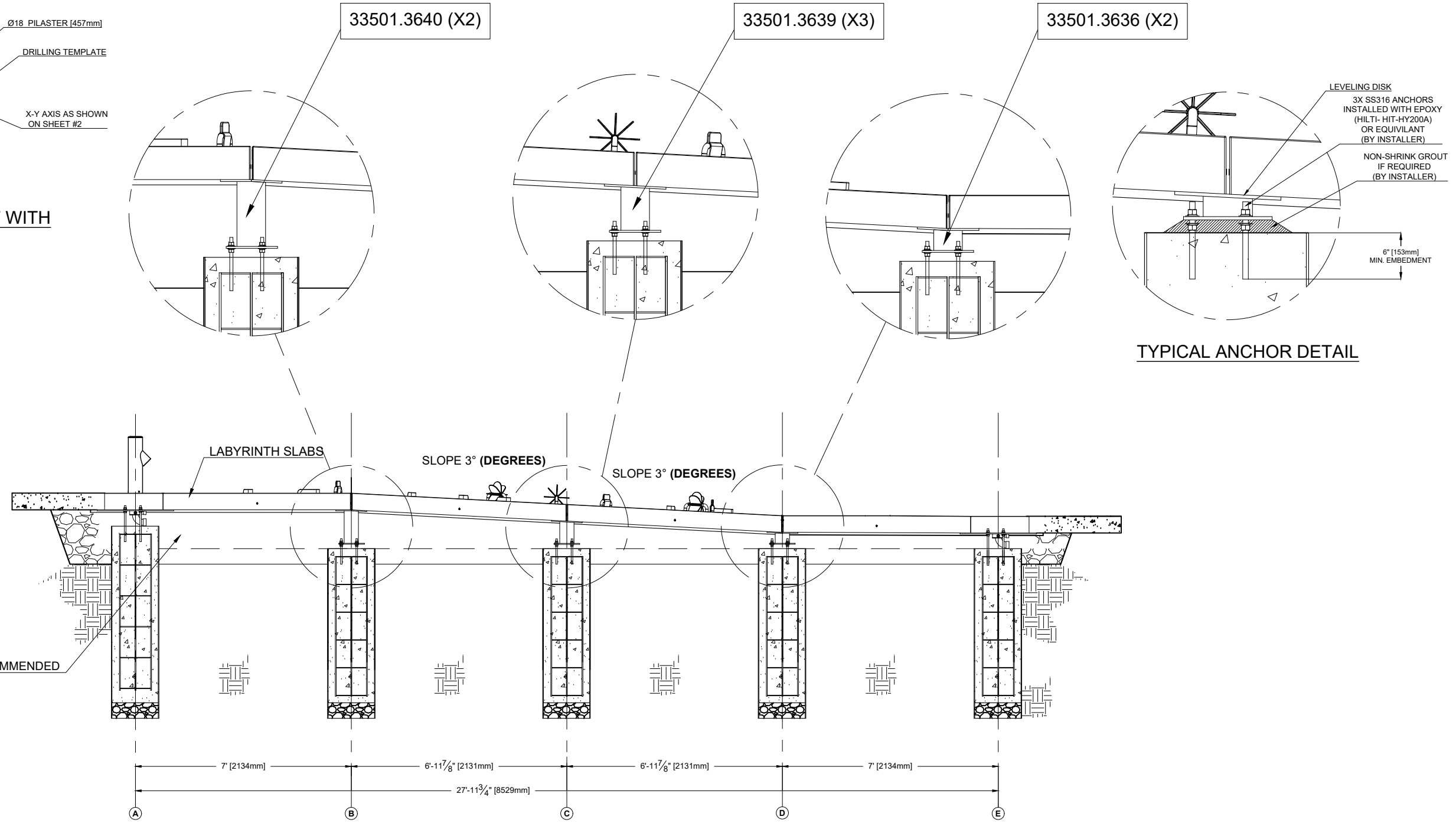
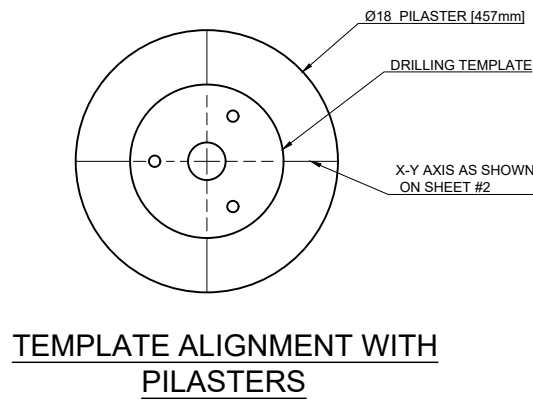
Page #

WJ02

Rev.

R03

- MAKE SURE DRILLING TEMPLATE IS CORRECTLY ALIGNED WITH X-Y AXIS BEFORE DRILLING.
- CONNECT THE WATER INLETS, DRAIN LINE, AND ELECTRICAL SYSTEM (IF REQUIRED) FOR THE WATER SOURCE, AND CONNECT THE DRAIN BASIN AND OR FLOW BASIN DRAIN LINES BEFORE INSTALLING SLABS. REFER TO SHEET #4 FOR PUMP AND DRAIN BASIN



WATER JOURNEY-LABYRINTH

Project Location / Lieu du projet

Project Number / Numéro de projet

Order Number / Numéro de commande

Date	Revision Description	No.	By/Par
11/02/2019	UPDATED WATER ENTRY	03	JC
11/10/2017	UPDATED REV.	02	MM
08/02/2016	RELEASE FOR INSTALLATION	01	HK

Date	Revision Description	No.	By/Par

Drawing Title/Titre du Dessin

LEVELING DISKS SUPPORTS

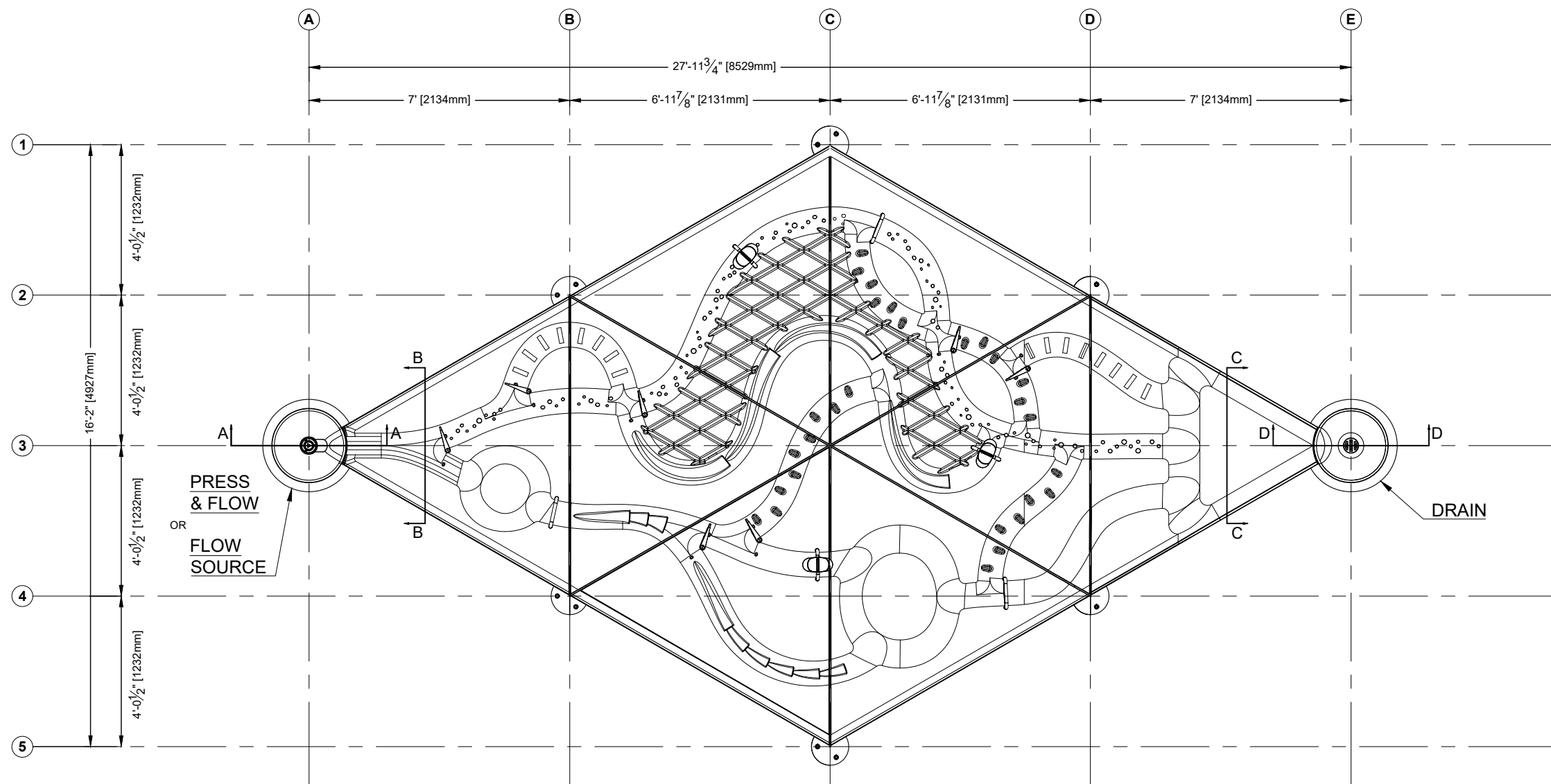
Drawn by/Dessiné par: HK
Verified by/Vérifié par: HK

Scale/Echelle: N.T.S.
Date: 11/02/2019

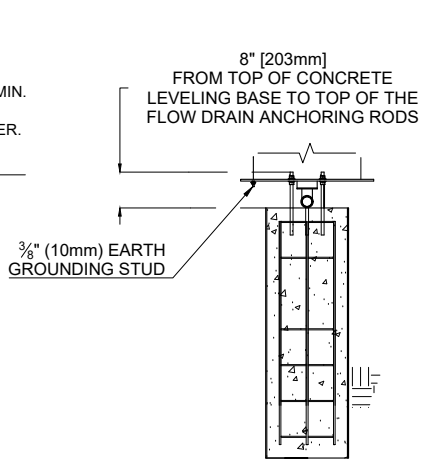
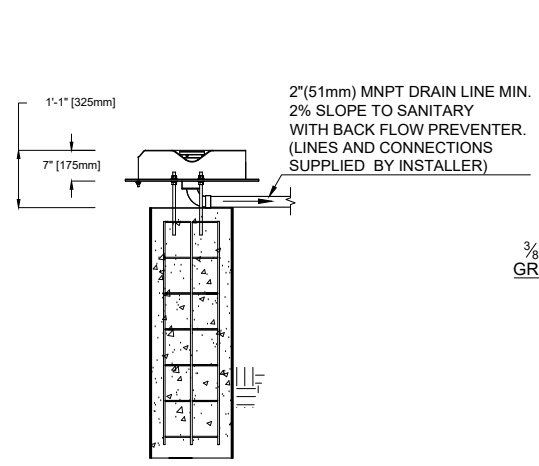
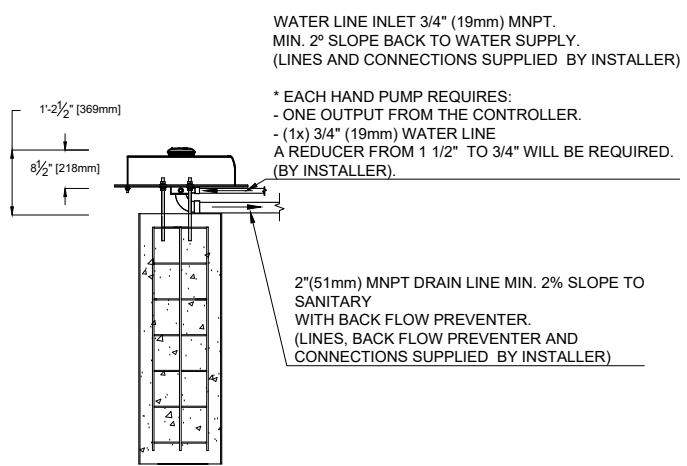
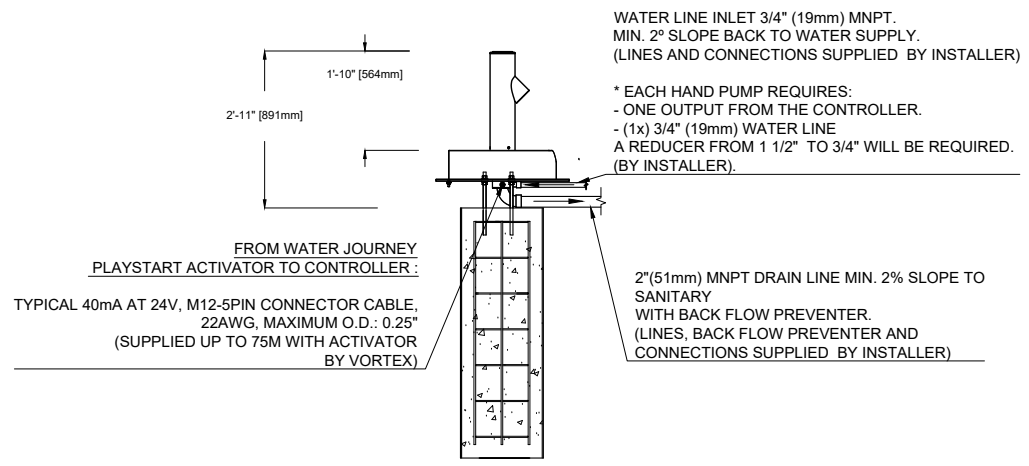
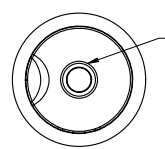
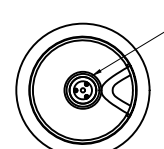
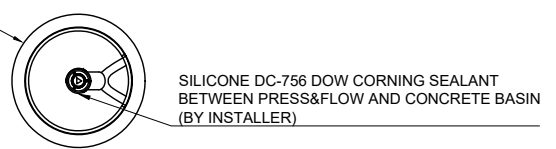
Page #: WJ03
Rev.: R03

COPYRIGHT VORTEX AQUATIC STRUCTURES INTERNATIONAL. THIS DOCUMENT AND THE IDEAS, RENDERINGS AND OTHER CONTENTS CONTAINED THEREIN ARE THE SOLE PROPERTY OF VORTEX AQUATIC STRUCTURES INTERNATIONAL AND MAY NOT BE DISSEMINATED, COPIED, REPRODUCED OR OTHERWISE USED WITHOUT PRIOR WRITTEN CONSENT OF VORTEX AQUATIC STRUCTURES INTERNATIONAL.
 CE DOCUMENT EST EN TOUT TEMPS LA PROPRIÉTÉ DE VORTEX AQUATIC STRUCTURES INTERNATIONAL INC. ET NE PEUT ÊTRE UTILISÉ OU REPRODUIT SANS UN CONSENTEMENT ÉCRIT DE VORTEX AQUATIC STRUCTURES INTERNATIONALES INC.

WATER JOURNEY-LABYRINTH



Ø2'-6" [Ø756mm]



Project Location / Lieu du projet

Project Number / Numéro de projet

Order Number / Numéro de commande

Date	Revision Description	No.	By/Par
11/02/2019	UPDATED WATER SOURCE	03	JC
11/10/2017	UPDATED REV.	02	MM
08/02/2016	RELEASE FOR INSTALLATION	01	HK

Drawing Title/Titre du Dessin
DRAIN & WATER SOURCE INSTALLATION

Drawn by/Dessiné par
 HK

Verified by/Vérifié par

Scale/Echelle
 N.T.S.

Date
 11/02/2019

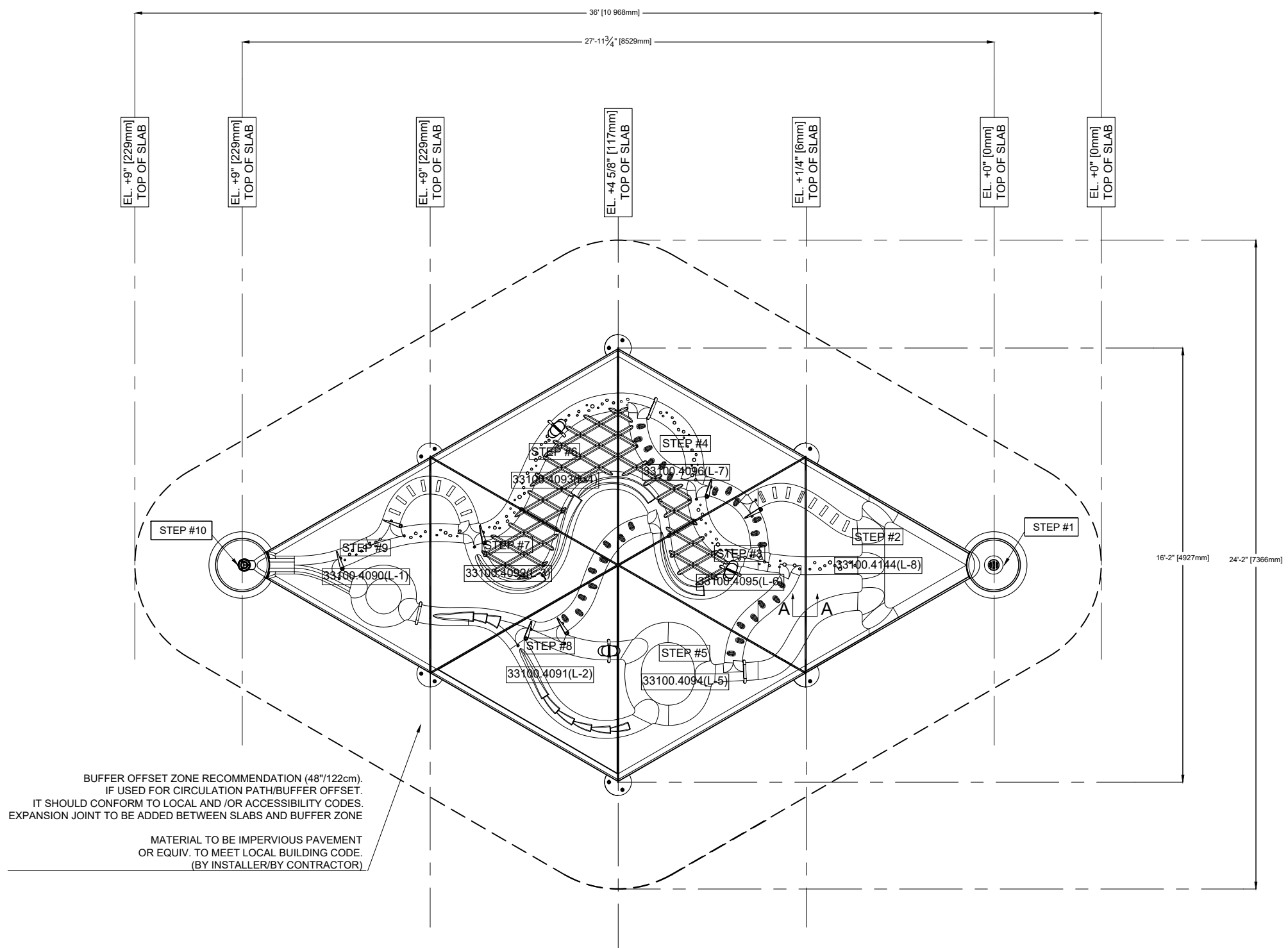
Page #
 WJ04

Rev.
 R03

WATER JOURNEY-LABYRINTH

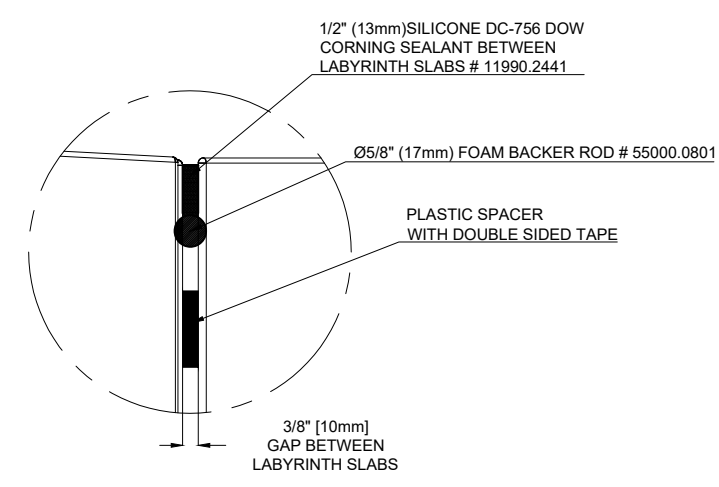
NOTES:

1. UNPACK THE GLASS FIBER REINFORCED CONCRETE SLAB TRIANGLES.
2. POSITION THE DRAIN BASIN, ALL TRIANGULAR SLABS, AND THE HAND PUMP BASIN ON THE LEVELING SUPPORT DISKS AND LEVEL THEM. AFTER INSTALLING EACH SLAB OR BASIN THE LEVEL MUST BE CHECKED. **FOLLOW STEPS 1-10 ON THE DRAWING.**
 - A. LAY ALL TRIANGULAR GFRC SLABS DOWN FLAT AND IDENTIFY SLABS CORRECTLY (L-1 TO L-8) AND FIGURE THE RIGHT POSITION.
 - B. START WITH THE TRIANGULAR GFRC SLAB THAT TOUCHES THE DRAIN BASIN.
 - C. USE THREE (3) ½"-13NC EYEBOLTS AND/OR STRAPS TO PLACE THE TRIANGULAR GFRC SLAB IN THE CORRECT POSITION ON TOP OF THE LEVELING DISKS. ENSURE THAT THE TRIANGULAR GFRC SLAB IS AT THE CORRECT HEIGHT. USE THE LEVELING BOLTS TO MAKE ADJUSTMENTS AS NECESSARY. ENSURE THAT THE SLAB IS LEVEL WITH THE EDGE OF THE BASIN. PLACE SHIMS UNDER SLABS TO ADJUST AS NECESSARY.
 - D. PLACE THE NEXT ADJACENT TRIANGULAR GFRC SLAB IN THE CORRECT POSITION ON TOP OF THE LEVELING DISKS. LEAVE A 3/8" (10 MM) GAP BETWEEN SLABS. USE SPACERS WITH DOUBLE SIDED TAPE PROVIDED BY VORTEX TO ACHIEVE THE PROPER GAP. THIS GAP WILL BE FILLED IN LATER WITH A 5/8" (17 MM) FOAM BACKER ROD AND SILICONE.
 - E. REPEAT STEPS C AND D UNTIL ALL SLABS ARE IN PLACE AND AT THE CORRECT LEVEL, PROVIDING THE REQUIRED SLOPE.
3. PUT FOAM BACKER ROD AND SILICONE DC-756 DOW CORNING SEALANT BETWEEN THE SLABS.
4. PUT SILICONE DC-756 DOW CORNING SEALANT BETWEEN THE DRAIN AND THE CONCRETE DRAIN BASIN. FOLLOW DOW'S RECOMMENDATIONS IN THE MANUAL.
5. ATTACH THE WATER SOURCE AND ALL INTERACTIVE COMPONENTS.
6. FILL IN THE SURROUNDING AREA AND BUILD A CONCRETE BUFFER/ACCESS AREA AROUND THE WATER JOURNEYS MODULES.



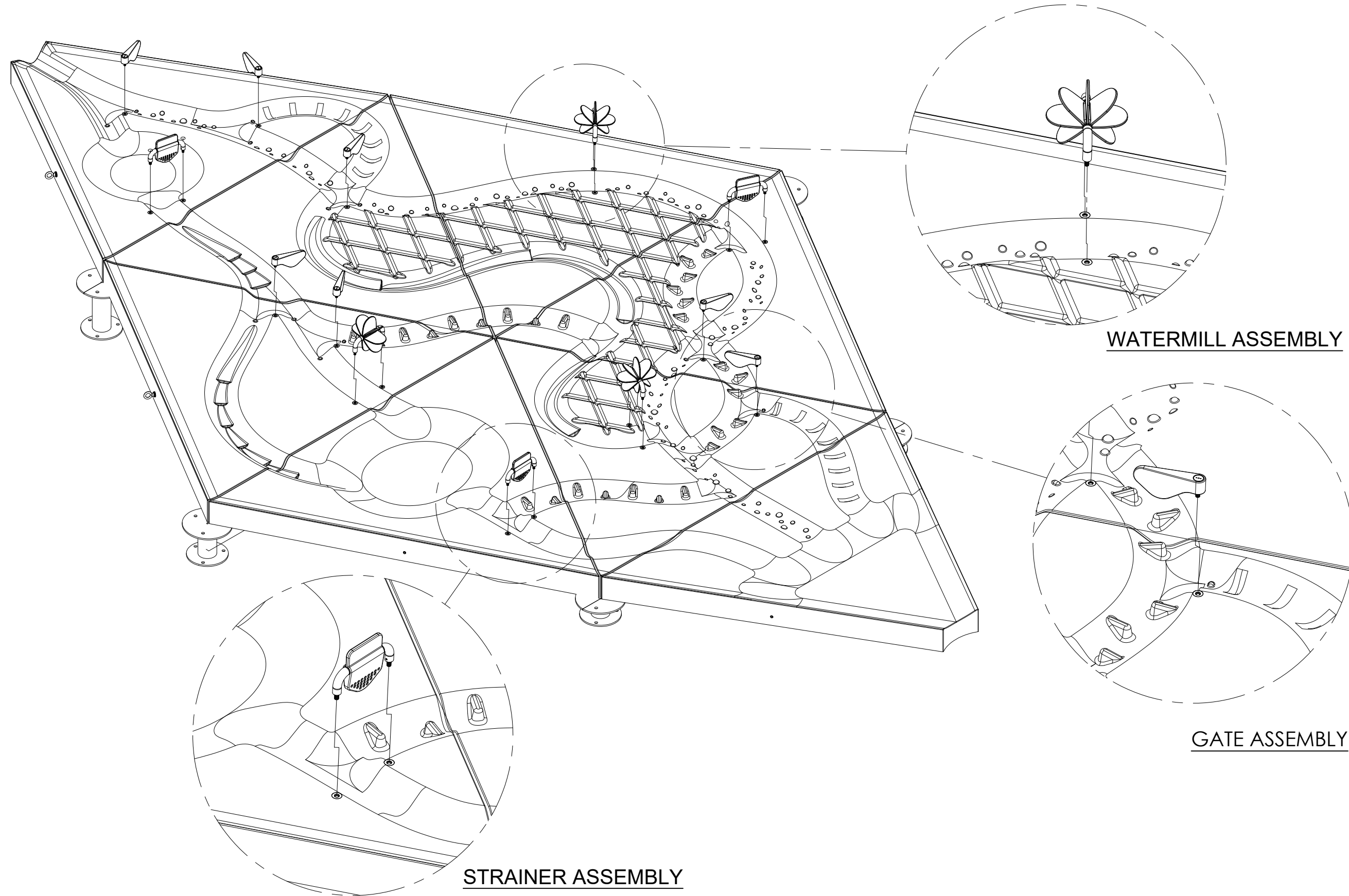
BUFFER OFFSET ZONE RECOMMENDATION (48"/122cm).
 IF USED FOR CIRCULATION PATH/BUFFER OFFSET,
 IT SHOULD CONFORM TO LOCAL AND /OR ACCESSIBILITY CODES.
 EXPANSION JOINT TO BE ADDED BETWEEN SLABS AND BUFFER ZONE

**MATERIAL TO BE IMPERVIOUS PAVEMENT
 OR EQUIV. TO MEET LOCAL BUILDING CODE.
 (BY INSTALLER/BY CONTRACTOR)**



SECTION A-A

Project Location / Lieu du projet			
Project Number / Numéro de projet			
Order Number / Numéro de commande			
11/02/2019	UPDATED WATER SOURCE	03	JC
11/10/2017	UPDATED REV.	02	MM
08/02/2016	RELEASE FOR INSTALLATION	01	HK
Date	Revision Description	No.	By/Par
Drawing Title/Titre du Dessin			
SLABS INSTALLATION			
Drawn by/Dessine par HK	Verified by/Verifie par		
Scale/Echelle N.T.S.	Date 11/02/2019		
Page # WJ05	Rev. R03		



WATER JOURNEY-LABYRINTH

Project Location / Lieu du projet

Project Number / Numéro de projet

Order Number / Numéro de commande

11/02/2019	UPDATED WATER SOURCE	03	JC
11/10/2017	UPDATED REV.	02	MM
08/02/2016	RELEASE FOR INSTALLATION	01	HK
Date	Revision Description	No.	By/Par

Drawing Title/Titre du Dessin

**WATER JOURNEY
 FEATURE INSTALLATION**

Drawn by/Dessiné par

HK

Verified by/Vérifié par

Scale/Echelle

N.T.S.

Date

11/02/2019

Page #

WJ06

Rev.

R03

STRAINER ASSEMBLY

WATERMILL ASSEMBLY

GATE ASSEMBLY