

**The product shown in the image may differ from the actual product sold.
Water jet heights may not always be equals depending on water flow.

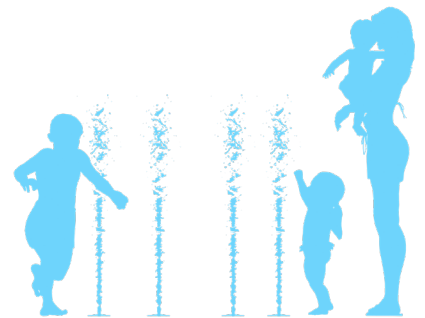
Ideal age group: For all ages

VOR 3056 SPRAYLINK™ CURVE

PRODUCT HIGHLIGHTS

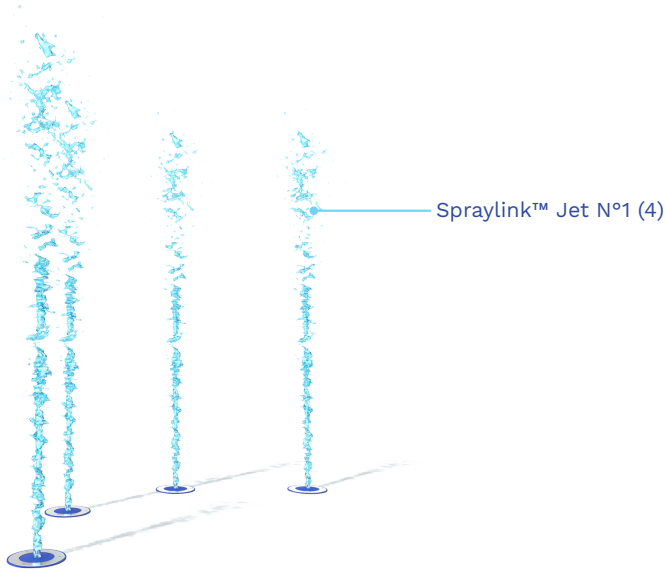
Spraylink™ is a cutting-edge ground spray collection. With a wide variety of water effects and designs to choose from, these ground sprays are a sustainable solution perfect for any sized Splashpad®.

- Enjoy running your feet and hands through soft water jets
- Provides high interactivity with low water consumption
- Offers many imaginative play opportunities
- Designed and manufactured with sustainability at the forefront
- One-size interchangeable nozzles for all Spraylink™ items



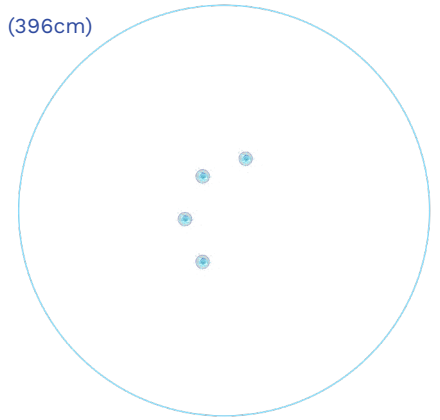
VORTEX-INTL.COM • INFO@VORTEX-INTL.COM
1.877.586.7839 (free USA/CANADA)
+1.514.694.3868 (INTERNATIONAL)

SPECIFICATIONS



SprayZone

ø13' (396cm)



Recommended jet height: 5 ft (152cm)

H./W./L.

0/17.7/42.2 in
0/45/107 cm

Color choices

Colors as shown

Flow

8-11 GPM
30-41.5 LPM

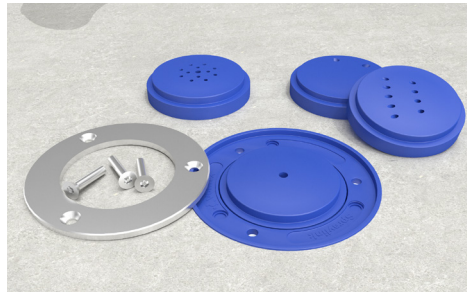
Pressure

2-4 PSI
0.1-0.3 BAR

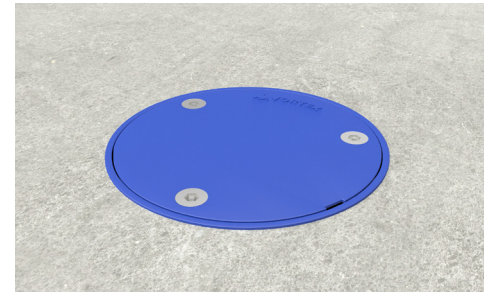
ADVANTAGES



Easy on-site assembly and installation



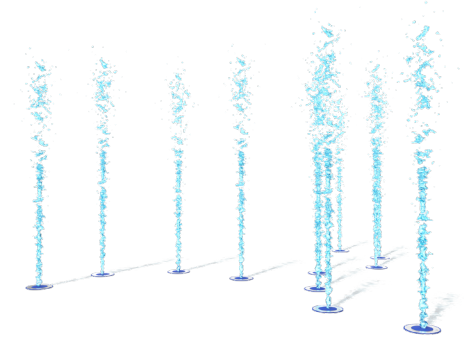
One-size interchangeable nozzle
(sufficient flow and sprayzone required)



Easy maintenance and winterization

INSTALLATION

- Follow Installation guide provided.
- Polymer encapsulated assembly, no earth grounding and bonding recommended for Spraylink™ system. Follow local code.
- Replace nozzle and ring with provided cap for winterization.



Alternative configuration 3x item



VORTEX-INTL.COM • INFO@VORTEX-INTL.COM
1.877.586.7839 (free USA/CANADA)
+1.514.694.3868 (INTERNATIONAL)