

**The product shown in the image may differ from the actual product sold.
Water jet heights may not always be equals depending on water flow.

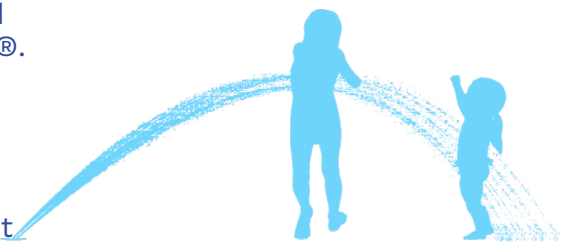
Ideal age group: For all ages

VOR 3004 SPRAYLINK™ FAN

PRODUCT HIGHLIGHTS

Spraylink™ is a cutting-edge ground spray collection. With a wide variety of water effects and designs to choose from, these ground sprays are a sustainable solution perfect for any sized Splashpad®.

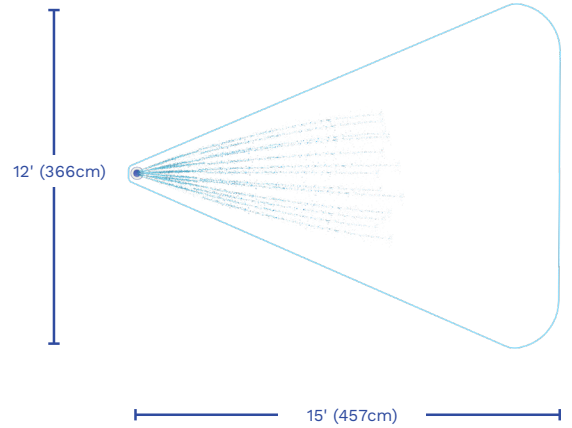
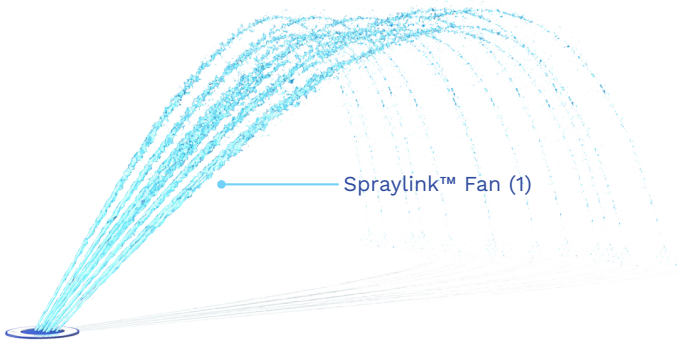
- Enjoy running your feet and hands through soft water jets
- Provides high interactivity with low water consumption
- Offers many imaginative play opportunities
- Designed and manufactured with sustainability at the forefront
- One-size interchangeable nozzles for all Spraylink™ items



VORTEX-INTL.COM • INFO@VORTEX-INTL.COM
1.877.586.7839 (free USA/CANADA)
+1.514.694.3868 (INTERNATIONAL)

SPECIFICATIONS

SprayZone



H./W./L.

0/5.3/5.3 in
0/13.5/13.5 cm

Color choices

Colors as shown

Recommended jet height: 3' (91cm)
Recommended jet length: 10' (305cm)

Flow

6-8 GPM
22.5-30 LPM

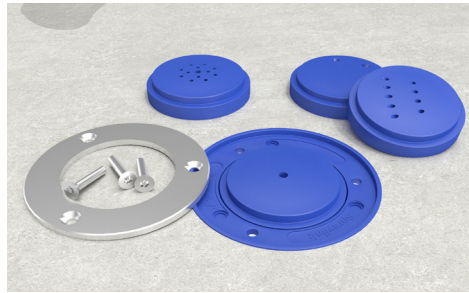
Pressure

4-6 PSI
0.3-0.4 BAR

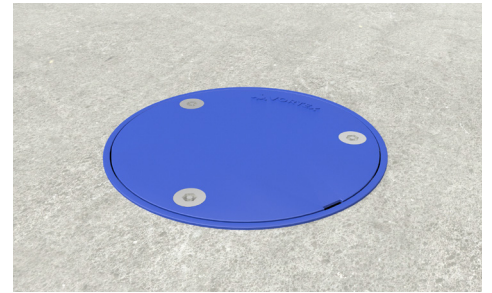
ADVANTAGES



Easy on-site assembly and installation



One-size interchangeable nozzle
(sufficient flow and sprayzone required)



Easy maintenance and winterization

INSTALLATION

- Follow Installation guide provided.
- Polymer encapsulated assembly, no earth grounding and bonding recommended for Spraylink™ system. Follow local code.
- Replace nozzle and ring with provided cap for winterization.



VORTEX-INTL.COM • INFO@VORTEX-INTL.COM
1.877.586.7839 (free USA/CANADA)
+1.514.694.3868 (INTERNATIONAL)