



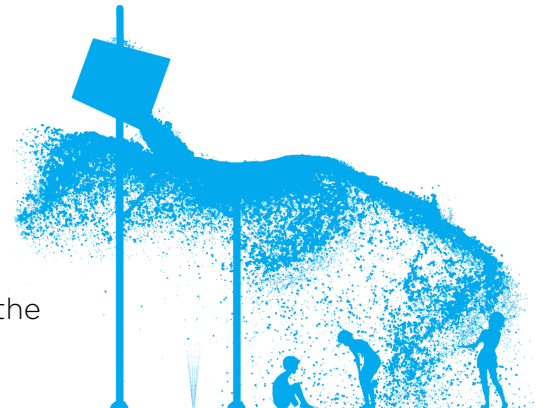
**The product shown in the image may differ from the actual product sold.*

Ideal age group: 6 years and up

VOR 0130 SUPERSPLASH N°2

PRODUCT HIGHLIGHTS

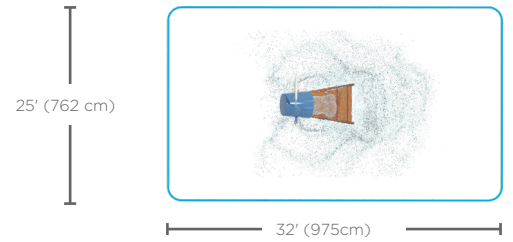
- Builds anticipation as the bucket fills and spills over
- Massive water splash that excites everyone
- Encourages communicative and interactive experiences
- Provides a visual experience by casting colorful shadows with the Seeflow™



VORTEX-INTL.COM • INFO@VORTEX-INTL.COM
1.877.586.7839 (free USA/CANADA)
+1.514.694.3868 (INTERNATIONAL)



Spray Zone 35 GA



H/W/L	Pressure
251/88/129 in	10-15 PSI
637/223/326 cm	0.7-1 BAR

Flow
25-38 GPM
94.6-143.8 LPM
Color Choices: Vortex colors

VORTEX EXCLUSIVE TECHNOLOGIES

This product features the following technologies that are unique to Vortex.



TOEGUARD™

- Soft-touch elastomer
- Protects children's toes from anchoring hardware
- Durable, vandal resistant, resistant to chemicals
- Infused with a UV resistant bright color
- Available in one or two pieces ensuring tight fit to post



SAFESWAP™ ANCHORING SYSTEM

- Attractive ground caps are substituted for future play products
- Easily add future play elements with no change to infrastructure
- Easily move products from one location to another at no additional cost
- Provides flexibility to spread investment over time as capital becomes available
- Structural stainless steel base for maximum strength
- Optional interim spray cap (as shown)



SEEFLOW™

- Impact-resistant polymer
- Resistant to UV rays and chemicals
- Colorful reflections are created with the combination of bright colors, water, and sunlight
- Manufactured with up to 40% pre-consumer recycled materials
- Reusable at the end of life

WATER EFFECTS

- Cascade (1)



VORTEX-INTL.COM • INFO@VORTEX-INTL.COM
 1.877.586.7839 (free USA/CANADA)
 +1.514.694.3868 (INTERNATIONAL)